

## COZY HABITAT

Jaladhi Shah



## CLIENT PROFILE



**Name:** Dr. Pankil Shah (33) & CA Rinal Shah (33) with 8 months old twins (boy & girl).

They live in Bangalore in an independent house.

Husband, wife and the twins lives in the same bedroom.

## Background

Dr. Pankil Shah & CA Rinal Shah are working couple with 8 months old twins(boy&girl).

The wife is CA and has her own practice & office but due to the kids currently working from home. The husband is an ENT surgeon with private practise and comes home from 2pm to 5pm to have lunch & help her wife in taking care of kids.

They are modern couple who are managing their career and taking care of the babies. **In their bedroom, they sleep, feed babies, play with toys and with them, and also work.**

Their **kids love open space** so they could crawl and explore.

The couple **loves natural light and brightly lit rooms but also mood lightings**. They both like hanging lots of photos in their room. They **need more storage space** to accommodate all the kids stuff.

## FUNCTIONAL NEEDS

Fully  
upholstered  
bed

Give more  
storage  
space

Space  
saving  
solution for  
kids' bed

Bright  
lighting as  
well as  
mood  
lighting

Include  
sitting space

Open floor  
area for kids

No sharp  
edges

## EMOTIONAL NEEDS

Feeling of  
safety for  
kids

Spend  
quality time  
as a family

Warm and  
cozy

Encourage  
learning  
new things

Space  
where mom  
can work in  
the room  
with kids

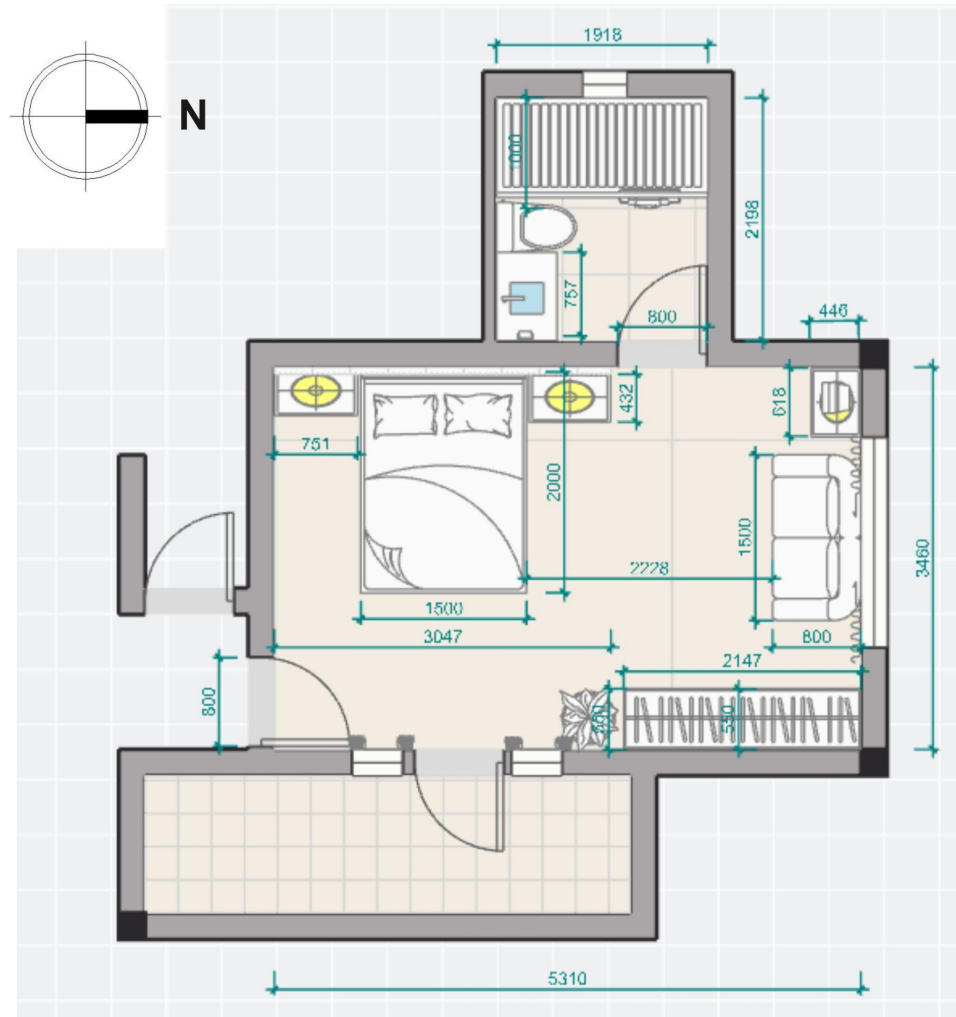
Couple  
loves  
natural light

Keeping all  
their photos

## DEVELOPMENT BOARD

<div>Project Number: 01</div> <div>Client: Dr. Pankil Shah &amp; CA Rinal Shah</div> <div>Designer: Jaladhi</div>			
AREA	REQUIREMENTS	DETAILS / OPTIONS / PREFERENCES	ACTIONS TO BE TAKEN
Bedroom	Softer edges	Giving big, filleted corner and use of upholstery to avoid sharp corners.	Finalized king sized fully upholstered bed with upholstered headboard.
	Increase storage space to accommodate kids' stuff	Plan smart storage/organizers which doesn't take up lot of space	Full height wardrobes are chosen with storage in bed as well as storage under the twins crib and a special storage units for kids
	Collapsible bed for kids	Adaptable or nesting bed for kids which can be nested inside the main bed when they are not sleeping	Finalized to use crib that can fit both kids and after they move out of the bedroom it can be used as a sofa.
	More mood lighting and dim light.	Multiple settings LED Lightings from single source can include diming switch or smart lighting.	All the downlights used in ceiling are white LEDs and all the ambient lighting is warm white.
	Like solid wood furniture	Solid wood with lighter stains, modern, minimalist with semi-gloss	Solid wood flute panels to be used on the wall where bed goes. Also, oak veneer 8mm to be used for flooring.
	Use light and neutral colors with a pop of color	Use neutral light colors with one wall/furniture piece of bright color or with some interesting texture/patterns	Pop of colors can be done by using colorful/patterned fabrics on cushion, bed sheets.

## LAYOUT 1



## SWOT ANALYSIS

### Strength

1. Good amount of space for movement
2. Sofa cum bed helps in saving the space when not slept in
3. Good ventilation and lot of daylight.

### Weakness

1. All the furniture are divided in zones and anchored towards the wall due to the placements of three doors & windows.
2. Storage space seems a bit less.

### Opportunity

1. Facilitates good movement, avoiding bumping into furniture
2. Gives plenty of space for the kids to play.

### Threats

1. Kids can fall from sofa cum bed as there is no protection.
2. Existing structure restricts the ways one can place the furniture

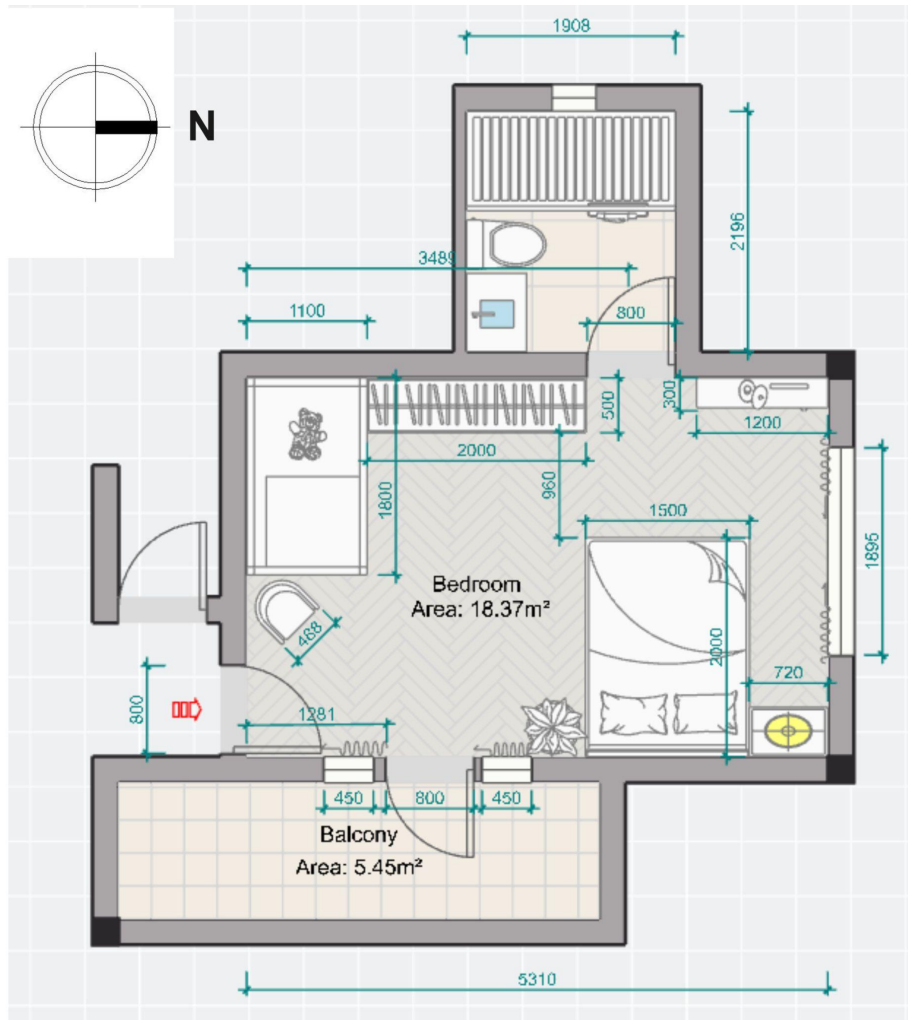
This detailed floor plan shows a 2-bedroom apartment with the following features and dimensions:

- Overall Dimensions:** Total width is 5310 mm and total depth is 3460 mm.
- Bedroom (Area: 18.37m²):** Located in the center, measuring 2210 mm by 1500 mm. It contains a bed, a wardrobe, and a desk.
- Bedroom (Area: 4.18m²):** Located at the top right, measuring 3078 mm by 1069 mm. It contains a toilet and a sink.
- Balcony (Area: 5.45m²):** Located at the bottom, measuring 450 mm by 800 mm. It has a glass railing and a door leading from the living area.
- Living Area:** The central open space, measuring 2200 mm by 1895 mm. It features a sofa, a coffee table, and a fireplace.
- Kitchen:** Located at the top left, measuring 1100 mm by 800 mm. It includes a sink, a stove, and a refrigerator.
- Bathroom:** Located at the top right, measuring 800 mm by 720 mm. It contains a bathtub and a toilet.
- Entrance:** The main entrance is located at the bottom left, measuring 800 mm by 1281 mm. It has a door leading into the living area.
- Dimensions:** The plan includes numerous specific measurements for walls, furniture, and fixtures, such as 1908 mm for the top width, 2196 mm for the top right depth, and 5310 mm for the total width.
- Orientation:** A compass rose indicates North (N) is towards the top left.

- 1.Restricts free movement of kids around the bed
- 2.A little less privacy as bed is opposite to the entrance.

## LAYOUT 3

Approved



## SWOT ANALYSIS

### Strength

1. There is a balance between negative and positive space.
2. Allows better movement without any hindrances.
3. Bathroom is easier to reach from bed for both husband and wife.

### Weakness

1. Due to the position of bed, it won't get enough daylight, in the mornings.

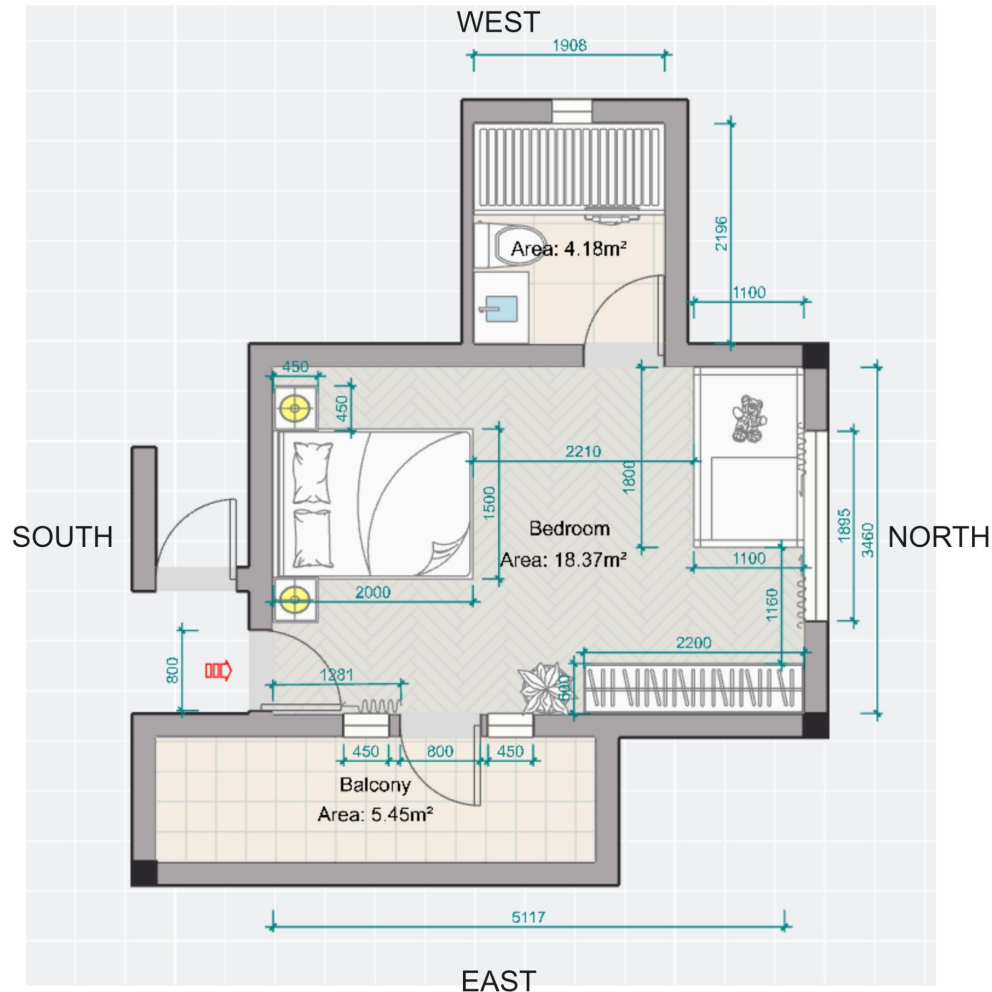
### Opportunity

1. The placement of furniture defines the play area for kids
2. This kind of furniture placement allows space for wall hung shelves for extra storage

### Threats

1. The bed is placed where the least amount of direct sunlight comes so might get less daylight.

## LAYOUT 4



## SWOT ANALYSIS

### Strength

- 1.Head of bed is facing south which can help the couple to relax more.
- 2.Kids' bed facing North as kid's room is supposed to be facing that direction according to vastu.

### Weakness

- 1.East cannot be used to place kids' bed as it has opening for balcony
- 2.As there is constraint of space I had to place wardrobe in North East
- 3.Person sleeping right side of the bed is furthest from bathroom

### Opportunity

- 1.The space looks less cluttered

### Threats

- 1.The alignment of crib to the window is not aligned properly.
- 2.East side cannot be used due to windows and balcony door.

# MOOD BOARD

Option 1



# MOOD BOARD

Option 2

Approved

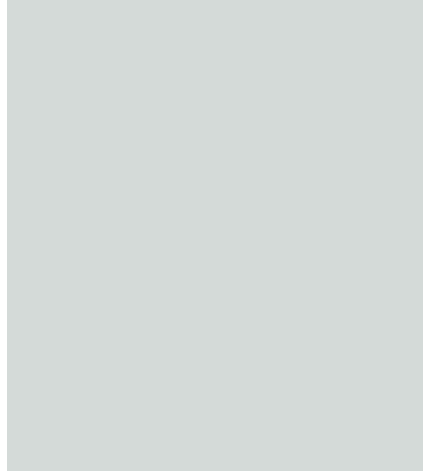


# MOOD BOARD

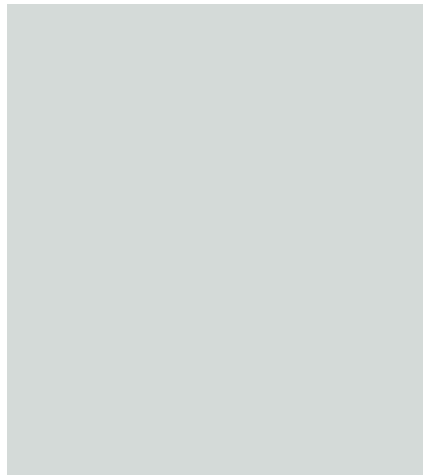
Option 3

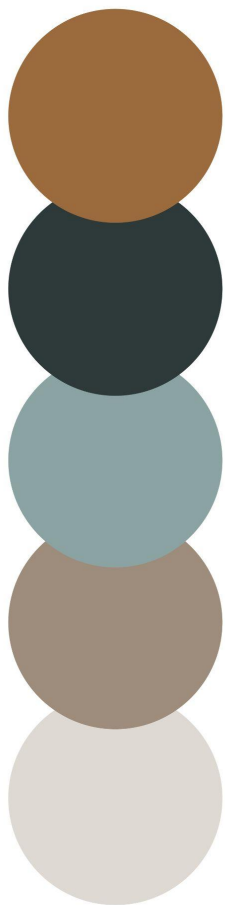
Approved

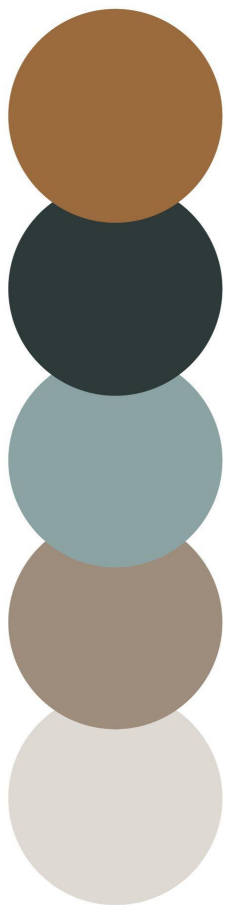


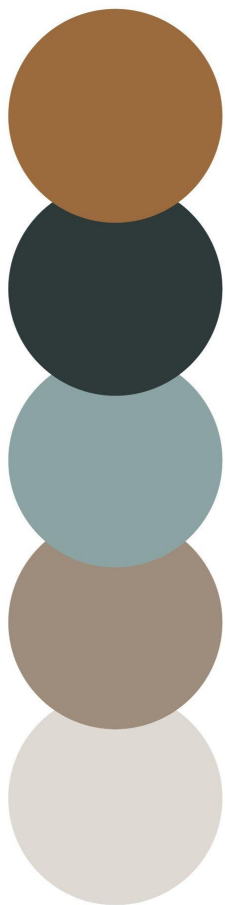


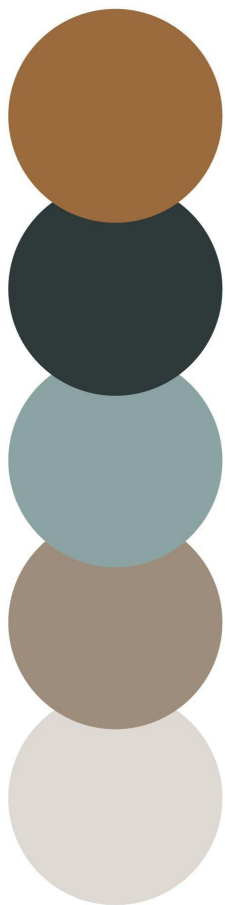
COLOR OPTION 1







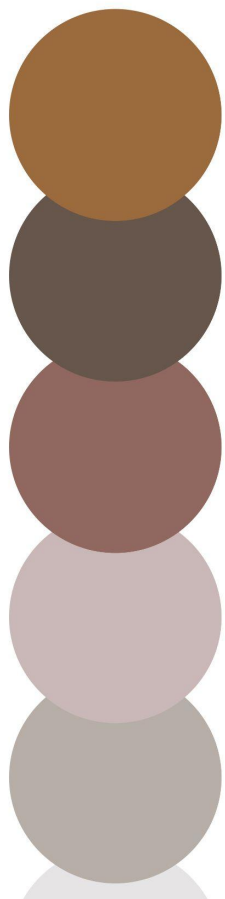


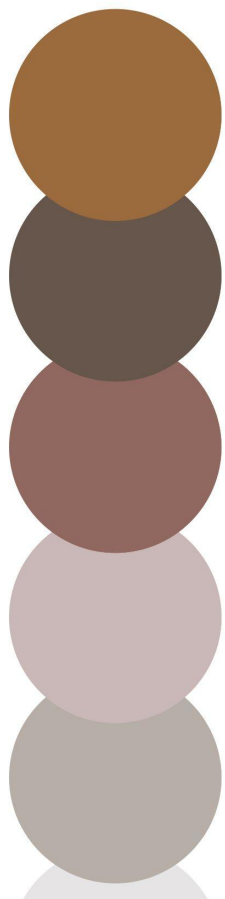


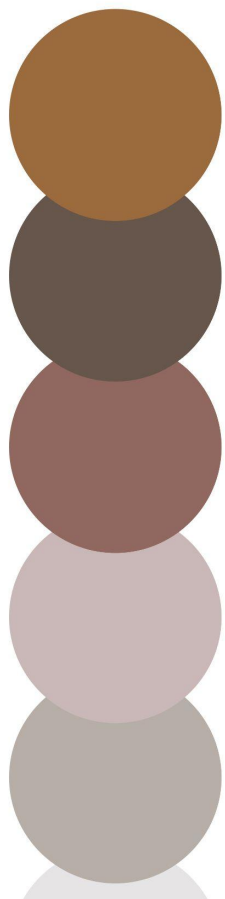


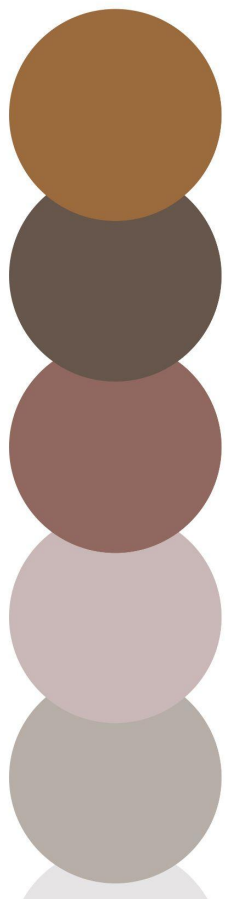
COLOR OPTION 2

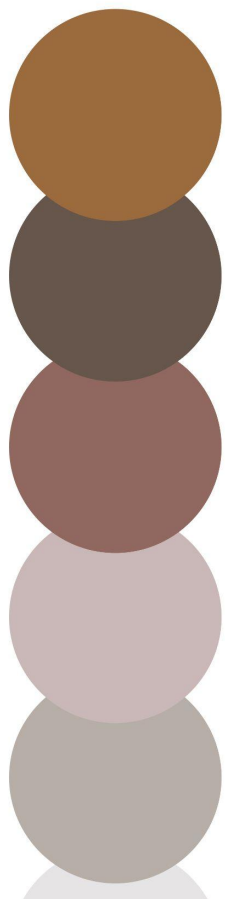










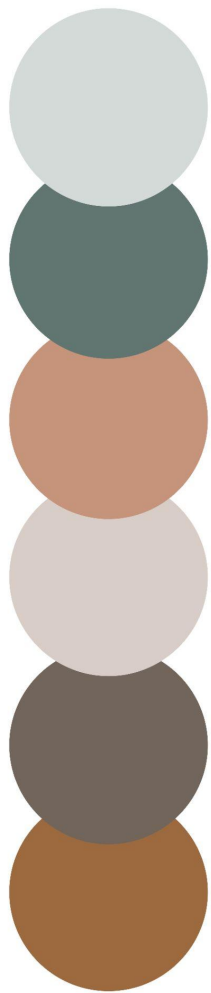


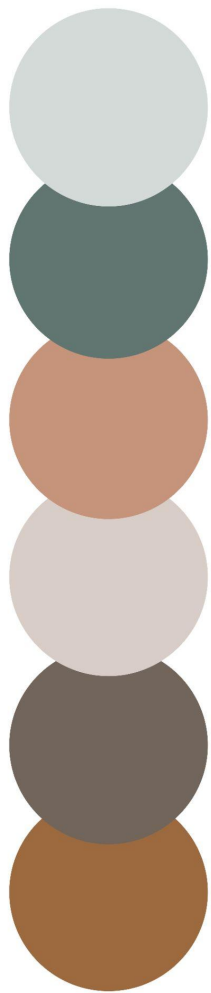


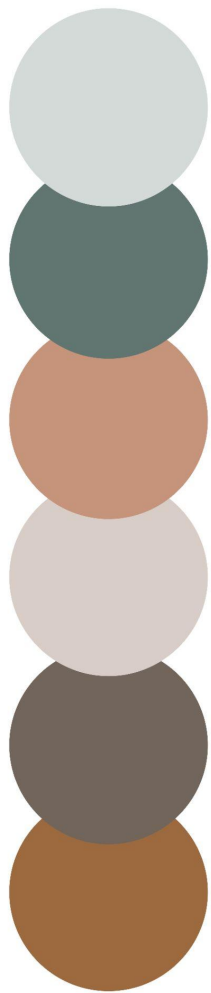
COLOR OPTION 3

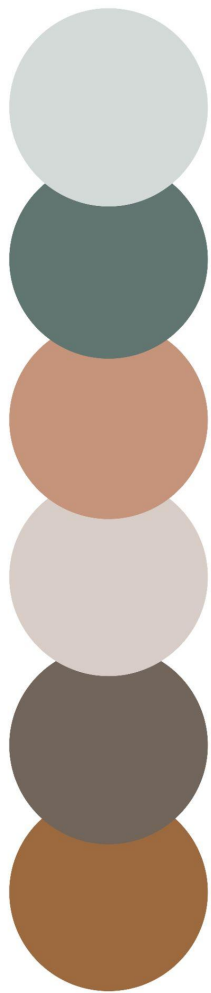


Approved











LIGHT OPTION 1



Both Pendant  
light and  
Downlight are  
warm white



Both magnetic  
track light &  
downlight are  
warm white





LIGHT OPTION 2



Both wall  
mounted light  
and Downlight  
are white



Both wall  
mounted light  
and Downlight  
are white





LIGHT OPTION 3



Approved

Pendant Light  
and is warm  
white and  
downlights are  
white



Wall mounted  
Light and is  
warm white  
and downlights  
are white










## CALLOUT SHEETS



Surface & Finishes	DImensions	Material & Finish	Brand	Reference Image
Wall Paint		Cool Crystal-N COLOUR CODE: 0977	Asian Paints (Royale Healthy Shield)	
Wall Paint		Fisherman's Wharf COLOUR CODE: 8342	Asian Paints (Royale Healthy Shield)	
Flutes wall Panels	2710mm W x 40mm D x 1200mm H	Solid wood Fluted panels with deco paint		
Flooring		Engineered wood 10mm thick Herringbone walnut oak with satin lacquer finish	Square Foot	

Furniture & Furnishings	Dimensions	Material & Finish	Brand	Reference Image
Engineered Wood King Size Drawer Storage Upholstered Bed	1180mm H x 1880mm D x 2150 W	Bed Frame- Engineered Wood Bed Base- Fully upholstered with cotton linen fabric Headrest-Fully upholstered in cotton linen fabric with button tufting Four drawers- Engineered wood with upholstered shutters	Urban Ladder (Thorpe bed)	
Floating Side Table	510mm L x 305mm D x 230mm H	Pre-Lam Board	Locally made	
Twin crib (upto 3 years of age)	1375mm L x 1220mm D x 914mm H	MDF with Anti Bacterial Laminates + Natural Steam Beech Wood with EN71 Certified Polish	LittleBird	
Kid's Storage	1000mm H x 550mm L x 300mm D	25mm thick pine wood with natural finish	Locally made	
Wardrobes	2000mm W x 660mm D x 2400 H	Pre-lam MR grade 25 mm thick Ply boards	Locally made	

Full Length Wall mounted mirror	1625mm H x 535mm	Mirror with Pine with black stain frame	Ubuy online store	
Base sheer curtain with Black out curtain		Plain sheer curtain of cotton(95%) polyester(5%)blend (white)  Blackout curtain of Polyester(dark pinkish grey)	Local vendor	
Solid wood Industrial look dressing table/side table	1140mm L x 345mm D x 975mm H	Solid sheesham wood	Pepperfry	
Surface LED Panel Downlights		12W (WHITE, 6500K)	The White Teak Company by Asian Paints	

Pendant Light		3W BLACK (3000K) LED DESIGNER SERIES PENDANT	The White Teak Company by Asian Paints	
Planter		Concrete Planter	Mason home	
Fan		52 INCH 6 BLADE WIND LAMP CEILING FAN REMOTE CONTROLLED - DARK WOOD	Fandom Lights	



FINAL DESIGN















THANK YOU

