



Bedroom Design

By Pawanjot Singh



Name-Vandana

Age-55 years

Background: Mrs. Vandana used to work in a scientific equipment making factory's accounts department. Now that she is retired, her ambitions still remain intact. She wants to pursue a digital marketing course by herself as she has good hand on computer software. She loves to host neighbours for evening tea and have chitchatting in her living room. She spends most of the times in kitchen as she loves to cook food. She loves watching Ekta Kapoor serials every evening and is ambitious about plants, gardens and growing vegetables at home.

Client Background

Functional Needs

Watching television

Reading novels

Studying on table

Meeting neighbour for tea



Client Needs

Emotional Needs

Evening Phone Call with daughter

Hosting neighbours



Client Needs

AREA	REQUIREMENTS	DETAILS / OPTIONS / PREFERENCES	ACTIONS TO BE TAKEN
Bedroom (15'6"X15'6")	<ul style="list-style-type: none">• LED Unit• Study Table• Bright room• Light tiles• Three seater• Wardrobe	<ul style="list-style-type: none">• LED Unit and study table both from wooden material• Warm White Lights• Beige Tiles• 3 Seater Loveseat• Wooden Wardrobe	<ul style="list-style-type: none">• Custom made GMG hardboard LED Unit & Study table• Havells 8'' Ceiling lights• Simpholo Beige 24''X48''• Ddecor• Hardboard made with white laminates



Client Brief Development Board

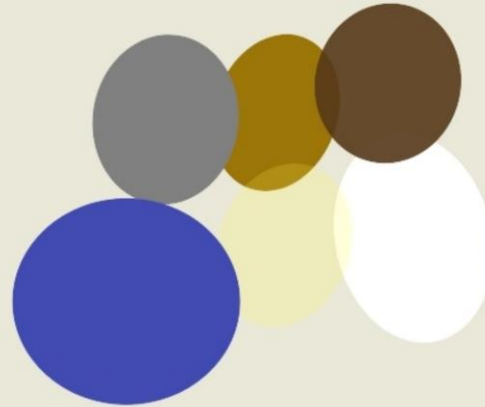
TEXTURE PALLET



FLOOR PALLET



COLOR PALLET



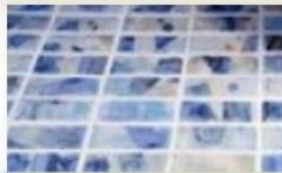
WARDROBE



BATHROOM



FLOOR PALLET



Client Mood Board I Theme-POP

TEXTURE PALLET



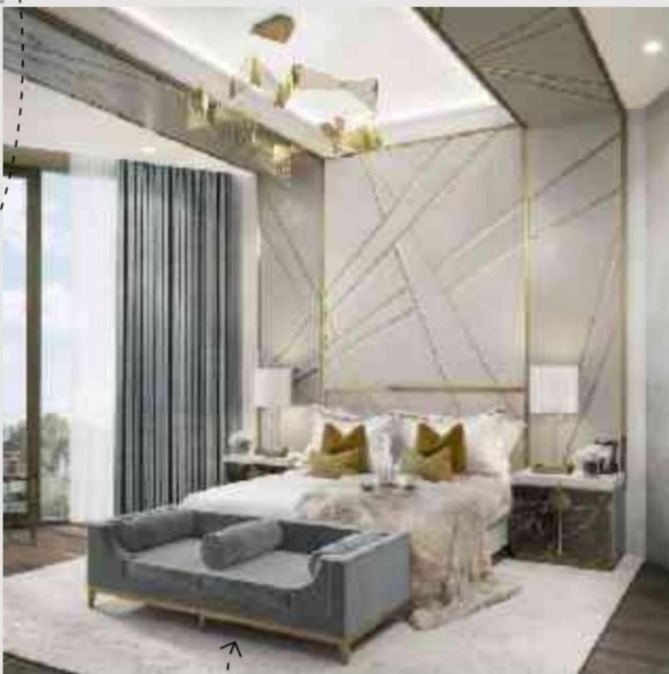
CHANDELIER



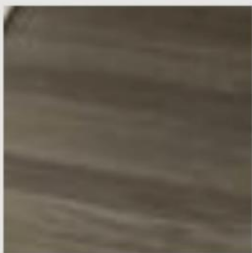
COLOR PALLET

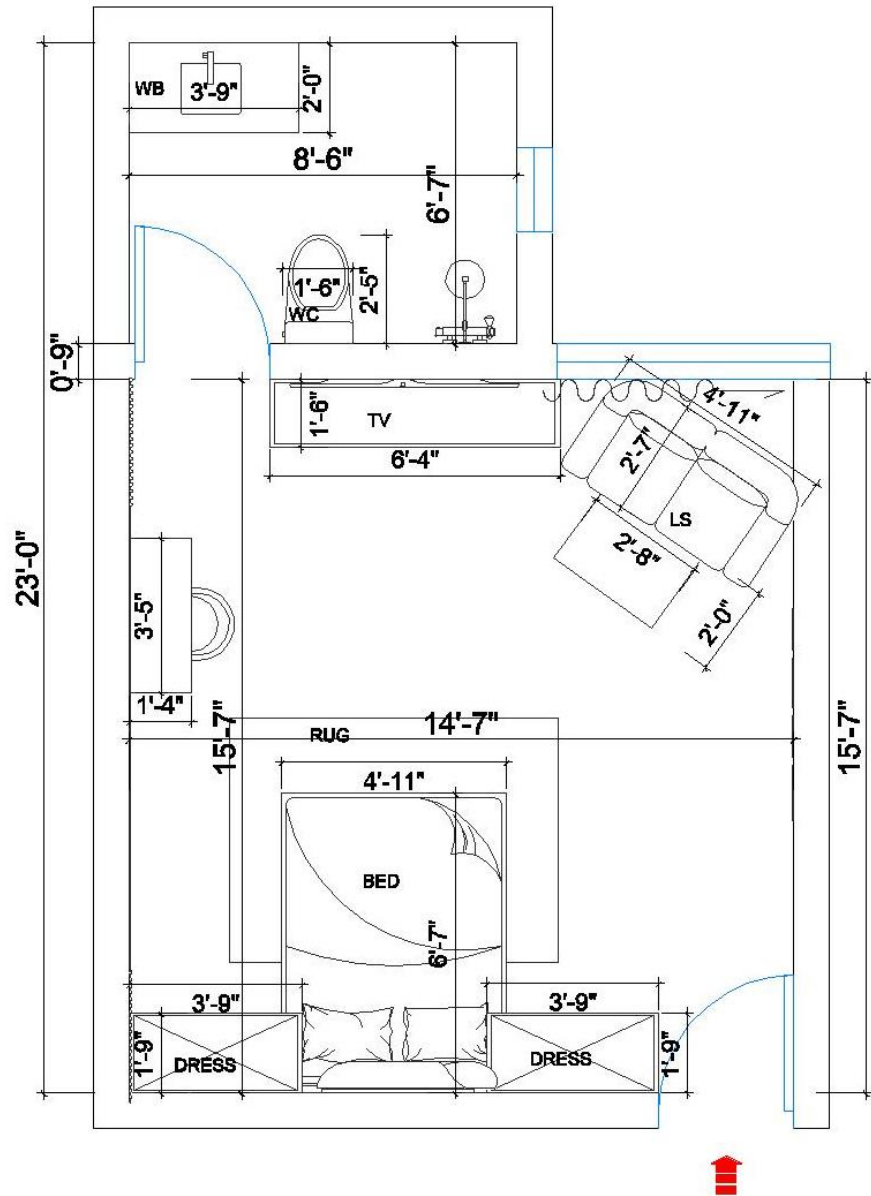


WARDROBE



FLOOR PALLET





Strength

1. Both Sides of bed have adequate space
2. Spacious rooms

Weakness

1. North of room has bed, which is not good according to Vaastu
2. No Dressing mirror in the room

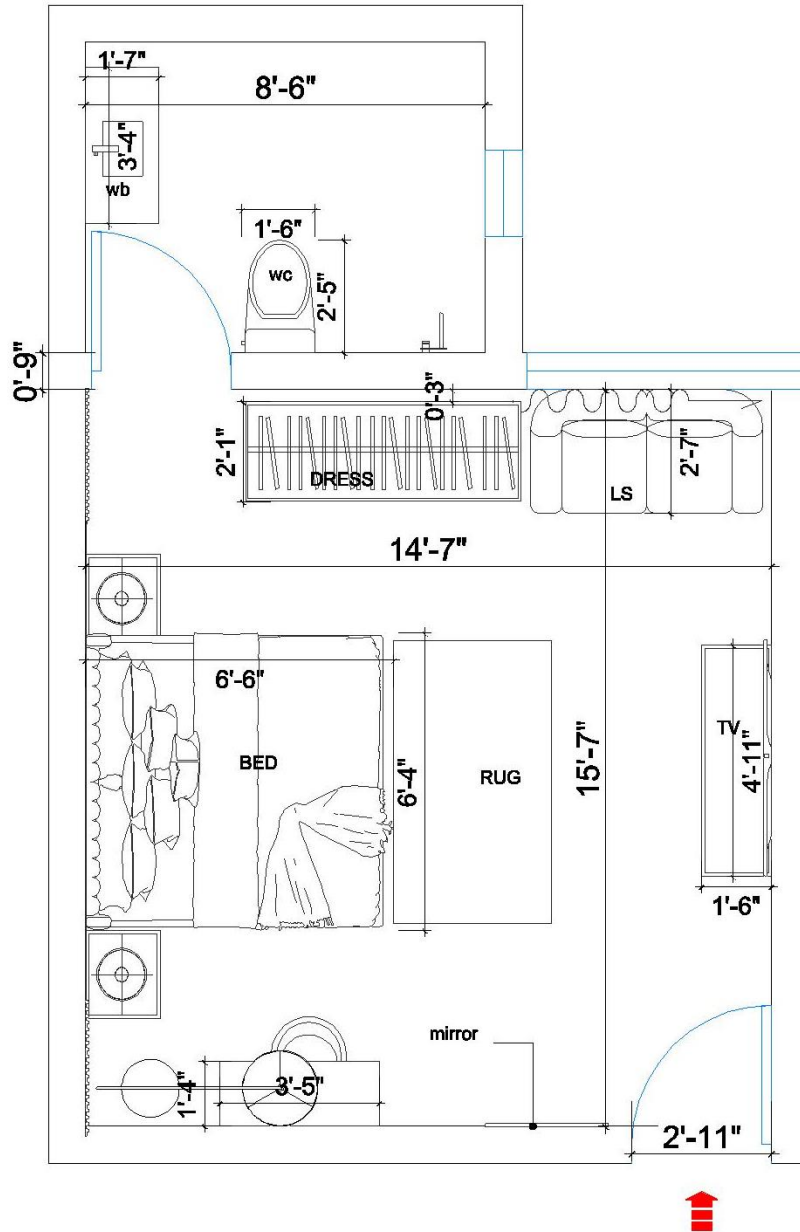
Opportunity

1. Can design right wall after entry to be decorative
2. Can place a rug ahead of the bed

Threat

1. Less space for storage
2. Doesn't follow the golden ratio rule

Layout Plan Option I



Strength

- 1.Has a beautiful dressing mirror
- 2.It is a vastu compliant room
- 3.Space is well planned

Weakness

- 1.Tightness according to movement
- 2.Tv unit is not aligned with bed
- 3.No coffee table in the room

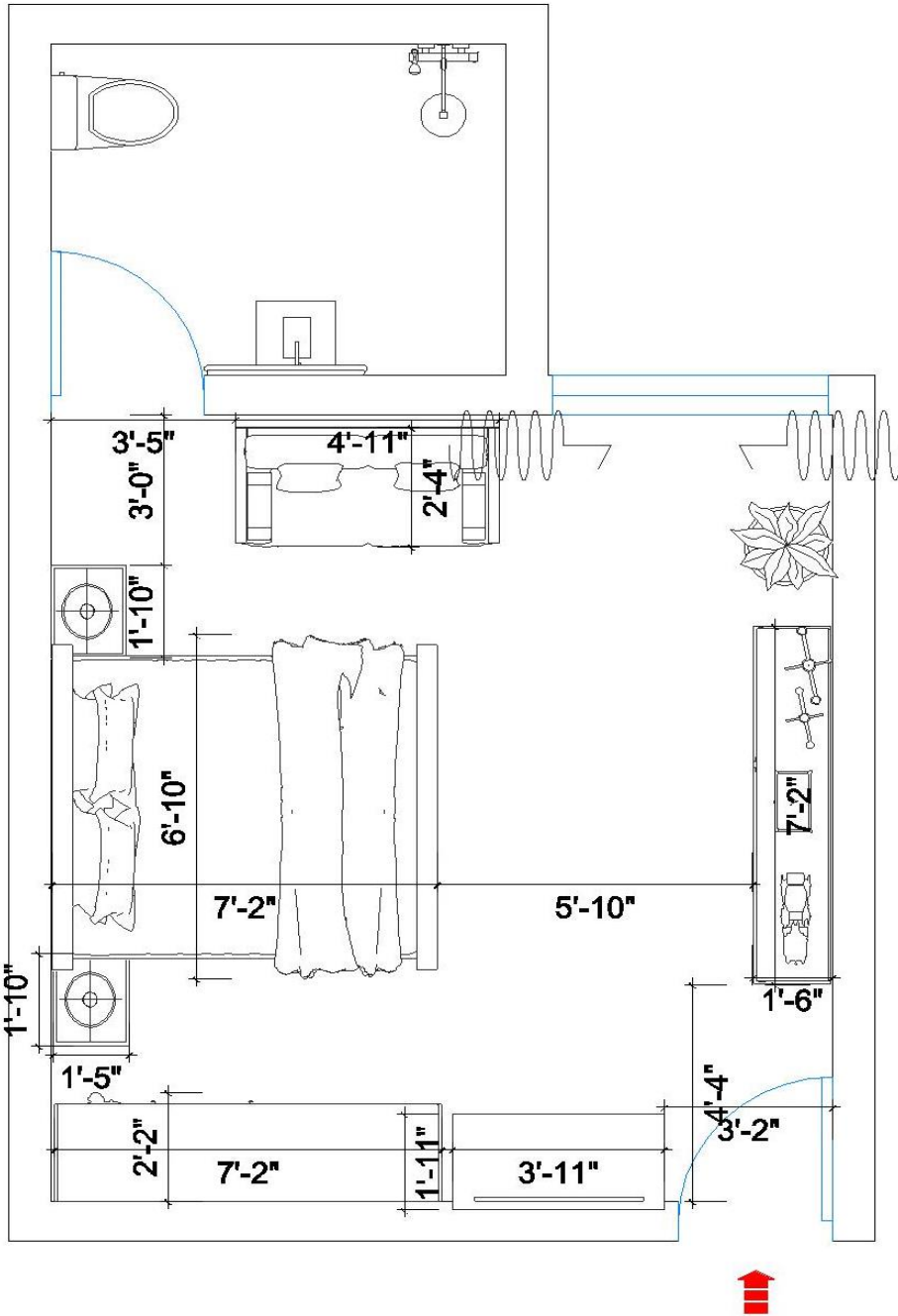
Oppurtunity

- .Corner lamp beside study table is giving focus light on table

Threat

- 1.Less natural light in the room
- 2.Bed is very close to Washroom door

Layout Plan
Option2



Strength

1. There is ample space to roam in the room
2. Extra Storage Facility with double wardrobe
3. Vaastu Compliant Room

Weakness

1. Tightness between bed and loveseat
2. No dressing mirror in the room

Opportunity

1. Can place a rug ahead of the bed
2. Can plan door of wardrobes to be sliding

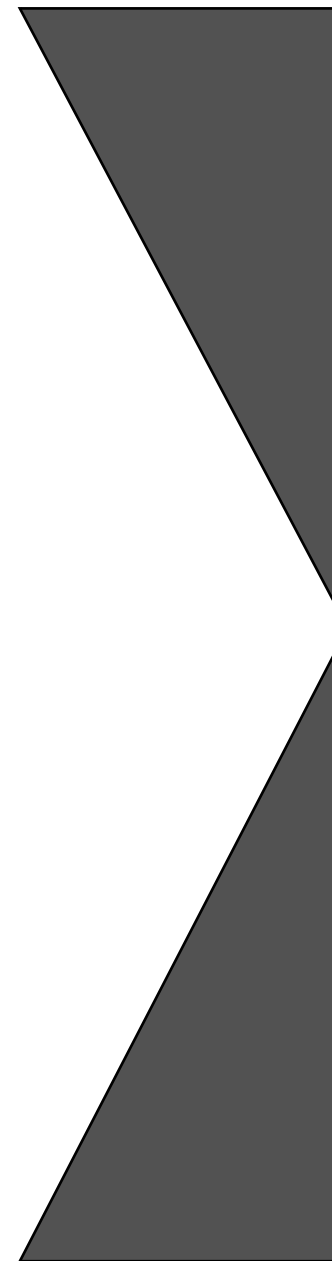
Threat

1. Tight space can lead to accidents when room is dark
2. Very less natural light in bedroom

Layout Plan Option 3

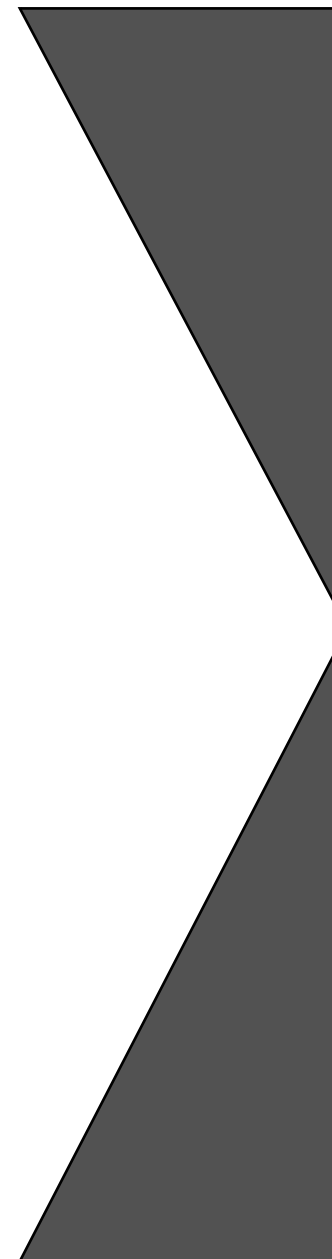
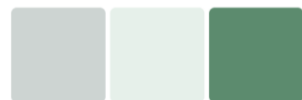


Colour
Option I



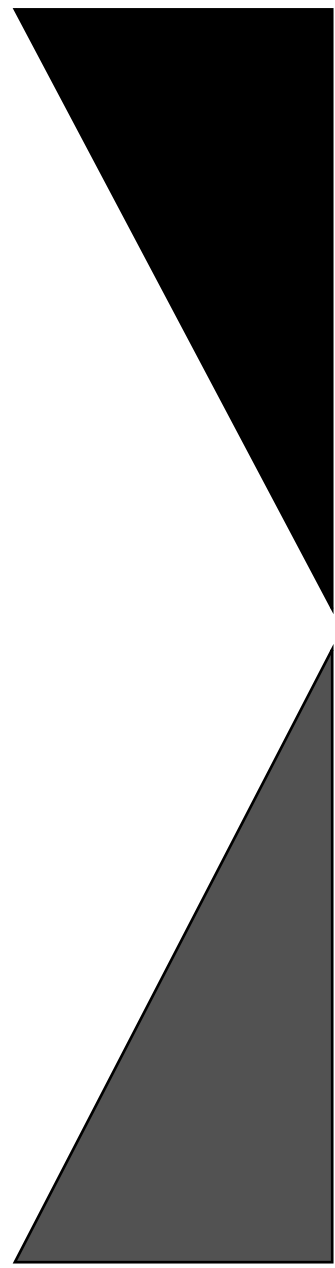
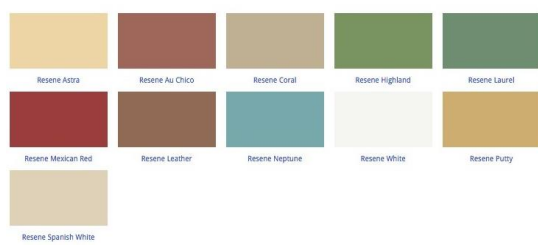


Colour
Option2





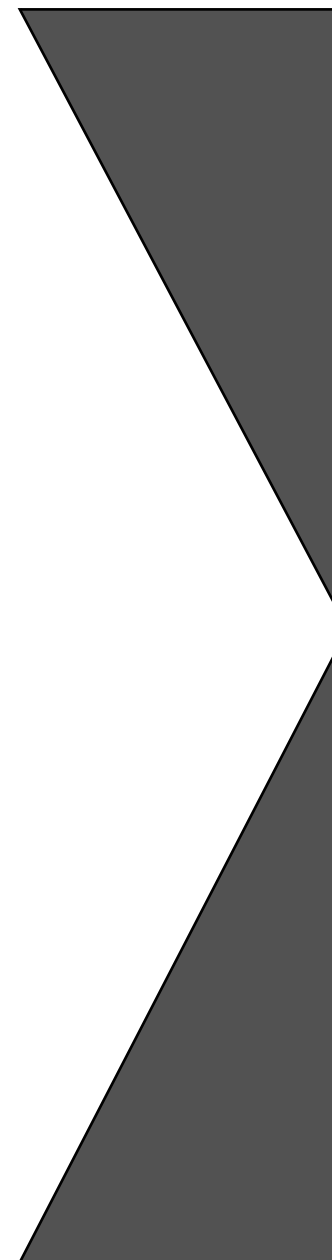
Colour
Option3





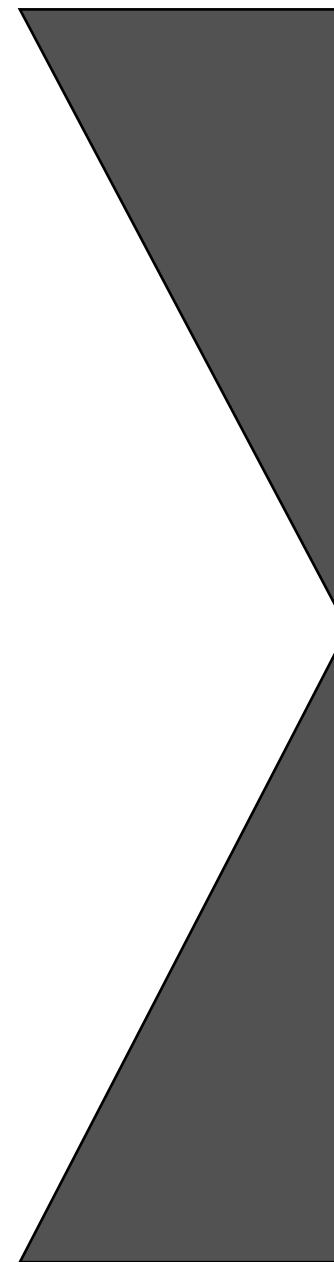
© COOHOM

Light
Option-
Natural White





Light
Option-
White





LightOption-
Warm White



**Wooden Bed from
local vendor**



**Beige Paint
by
Asianpaint
s**










**Flush Door by
GREENPLY**

**Callout:Surface
,Finishes&
Material**

**3D wallpaper
from local
vendor**



**Beige color 2x2
antiskid tiles
from
CERA**

Product Type	Size	Furnishing&Brand	Reference Image
Double Bed	<div>Size</div> <div>Length<div><div></div><div></div></div>6'10"ft</div> <div>Width<div><div></div><div></div></div>7'2"ft</div> <div>Height<div><div></div><div></div></div>3'8"ft</div>	Original Wood bed from local vendor Guliani Furnitures	
Wardrobe	<div>Length<div><div></div><div></div></div>9'3"ft</div> <div>Width<div><div></div><div></div></div>0'7"ft</div> <div>Height<div><div></div><div></div></div>9'2"ft</div>	Customised wardrobe made from greenply board&laminates	
TV unit	<div>Length<div><div></div><div></div></div>4'2"ft</div> <div>Width<div><div></div><div></div></div>2'7"ft</div> <div>Height<div><div></div><div></div></div>2'3"ft</div>	Customised Wooden Tv unit finished with white glossy paint	
Study Table	<div>Size</div> <div>Length<div><div></div><div></div></div>5'3"ft</div> <div>Width<div><div></div><div></div></div>4'10"ft</div> <div>Height<div><div></div><div></div></div>2'5"ft</div>	Customised study table with white glossy paint finish	
Curtains	<div>Length<div><div></div><div></div></div>8'5"ft</div> <div>Width<div><div></div><div></div></div>1'5"ft</div> <div>Height<div><div></div><div></div></div>9'2"ft</div>	Curtains & backchik from local vendor Kalra Home Decor	
Wall Decor	<div>Length<div><div></div><div></div></div>1'1"ft</div> <div>Width<div><div></div><div></div></div>0'2"ft</div> <div>Height<div><div></div><div></div></div>2'1"ft</div>	Wall decor from Amazon	
TV	<div>Length<div><div></div><div></div></div>3'0"ft</div> <div>Width<div><div></div><div></div></div>0'2"ft</div> <div>Height<div><div></div><div></div></div>2'3"ft</div>	Panasonic Tv From Amazon	
Indoor plant	<div>Length<div><div></div><div></div></div>2'4"ft</div> <div>Width<div><div></div><div></div></div>2'3"ft</div> <div>Height<div><div></div><div></div></div>3'11"ft</div>	Amazon	
Cieling Light	<div>Length<div><div></div><div></div></div>6'5"ft</div> <div>Width<div><div></div><div></div></div>8'10"ft</div> <div>Height<div><div></div><div></div></div>8'0"ft</div>	Wall mounted Downlights by Havells	

Callout: Furniture &Finishing



THANK YOU